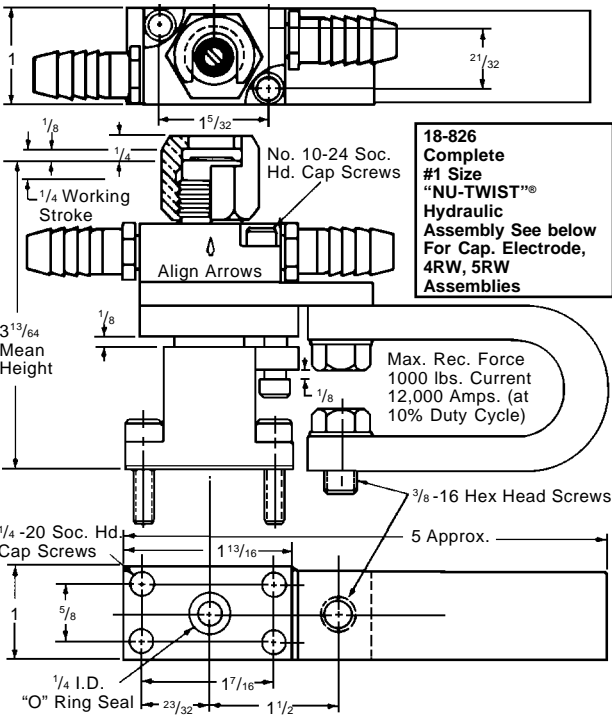


HYDRAULIC EQUALIZING ADAPTERS AND ASSEMBLIES

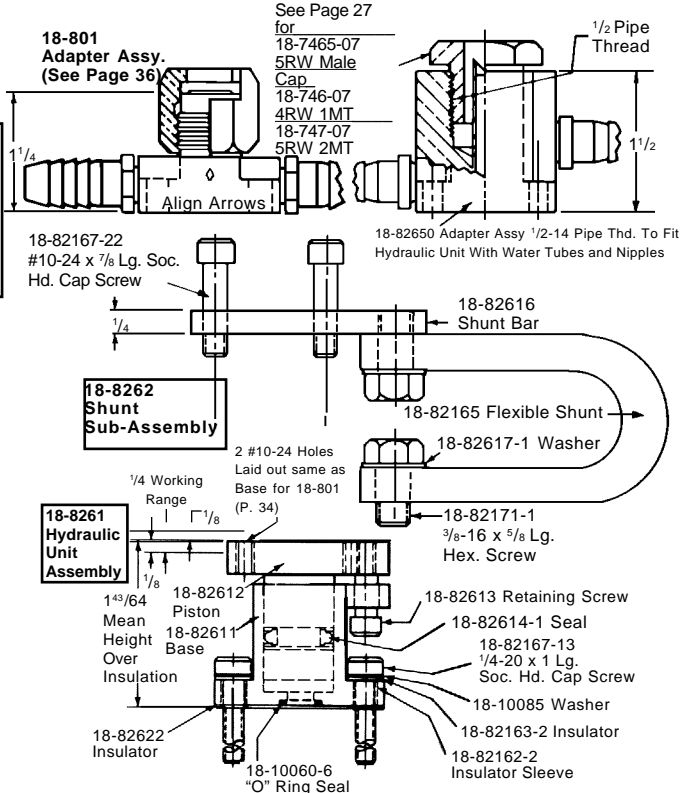
NSRW Co., Inc. (800) 933-6779, FAX: (205) 663-3221 Authorized Distributor CMW Inc.



CMW-Hydraulic Equalizing Adapter units are used to equalize the weld force when two or more welds are required simultaneously. The equalizing action is developed in a closed hydraulic system—and is accomplished by hydraulically interconnecting two or more units.



- 18-82651 Compl. #1 Size Hydr. Assy. for 5RW Male Cap
- 18-82652 Compl. #1 Size Hydr. Assy. 4RW 1MT
- 18-82653 Compl. #1 Size Hydr. Assy. 5RW 2MT



We recommend using a Fire Resistant Hydraulic Fluid compatible with BUNA "N" such as HOUGHTON-SAFE #620, 1120 or equivalent.

