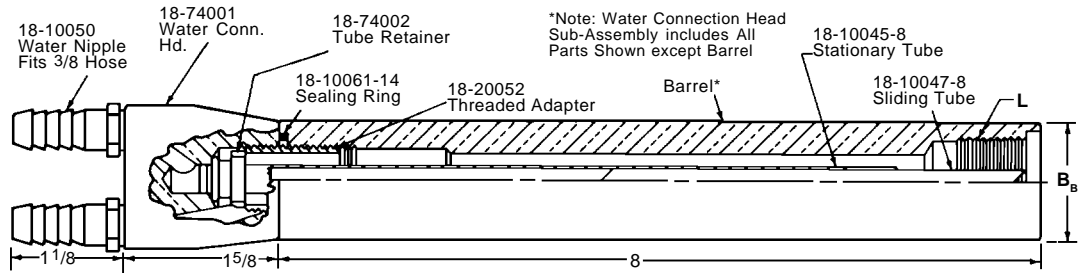


600 SERIES UNIVERSAL HOLDER COMPONENTS

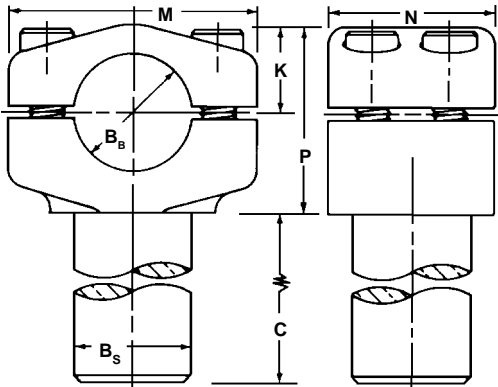
NSRW Co., Inc. (800) 933-6779, FAX: (205) 663-3221 Authorized Distributor CMW Inc.



SUB-ASSEMBLIES AND PARTS



*Note: Water Connection Head Sub-Assembly includes All Parts Shown except Barrel



UNIVERSAL BARREL (HOLDER) SUB-ASSEMBLY NO.	L Thread Size	B _B Barrel Dia.	Barrel Part No.*	Water Conn.* Sub-Assembly Part No.
18-701		1	18-37210-8	
18-702	7/8-14	1 1/4	18-37310-8	18-74000-8
18-704		1 1/4	18-37510-8	
18-705	1-14	1 1/2	18-37610-8	18-74000-8

"T" CONNECTORS FOR HOLDERS

"T" CONNECTOR ASSEMBLY NO.	B _B Hole Dia.	B _S Shank Dia.	C Shank Length	P Head Height	K ØHole Over Top	M Length	N Width	
18-725	1	7/8	3	1 3/4	3/4	2 5/16	1 1/2	2
18-726	1	1	3	1 3/4	3/4	2 5/16	1 1/2	BOLT
18-727	1 1/4	1 1/4	3 1/2	2	15/16	2 5/8	1 3/4	
18-728	1 1/2	1 1/4	4	2 5/16	1 1/8	2 7/8	2	4
18-729	1 1/2	1 1/2	4	2 5/16	1 1/8	2 7/8	2	BOLT
18-730	1 1/4	1 1/2	4	2 5/16	1 1/8	2 7/8	2	

Note: See Page 42 for 30° and small 90° "T" connections.

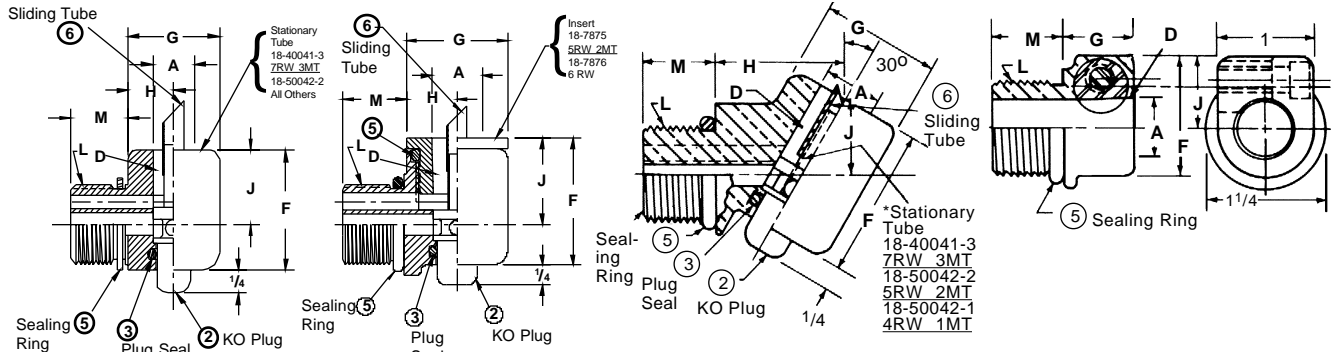
MALE THREAD TO FEMALE TAPER ADAPTERS

90° TYPE

ADAPT WITH INSERT

30° TYPE

STRAIGHT TYPE



ASSEMBLY PART NO.	Adapter Angle	MALE THREAD		FEMALE TAPER		F Overall Head Height	G Head Length	H End B'bl. to C.L. of Taper	J C.L. Barrel to C.L. of Taper	② K.O. Plug Part No.	③ K.O. Plug Seal Part No.	⑤ Sealing Ring Part No.	⑥ Sliding Tube Part No.
		L Size Thd.	M Length	D Size	A Major Dia.								
18-764	90°			4RW				19/32	13/16				
18-765	30°	7/8-14	9/16	1MT	.463	19/16	1 Dia.	11/16	15/32	18-50021	18-10060-8	18-76460	18-50041-1
18-766	90°					113/16	1 Dia.	19/32	11/16	18-50022			18-40043-3
18-767	30°	7/8-14	9/16	5RW	.625	113/16	11/16 Dia.	11/32	53/64	18-50022	18-10060-10	18-76460	18-40043-3
18-768	Str.			2MT		1 1/4	3/4	—	3/4	—	—	—	—
18-780	90°					113/16	1 1/4 Dia.	21/32	11/16	18-50022			18-40043-3
18-781	30°	1-14	3/4	5RW	.625	113/16	15/16 Dia.	13/8	13/16	18-50022	18-10060-10	18-10060-17	18-40043-3
18-784	Str.			2MT		1 1/4	3/4	—	3/4	—	—	—	—
18-782	90°			7RW		113/16	1 1/2 Dia.	25/32	13/16				18-40043-4
18-783	30°	1-14	3/4	3MT	.875	23/16	19/16 Dia.	13/8	13/16	18-50023	18-10060-12	18-10060-17	18-40043-4
*18-7805	90°			5RW		113/16	1 1/4 Dia.	21/32	11/16				18-40043-3
*18-7815	30°	1-14	3/4	2MT	.625	113/16	15/16 Dia.	13/8	13/16	18-50022	18-10060-10	18-10060-17	18-40043-3
*18-7806	90°					113/16	1 1/4 Dia.	21/32	13/16				18-40043-3
*18-7816	30°	1-14	3/4	6RW	.750	115/16	15/16 Dia.	17/16	59/64	18-50022	18-10060-10	18-10060-17	18-40043-3

* These adapters have threaded inserts 18-7875—5RW 2MT or 18-7876—#6 RW Taper.

ORDER BY CMW PART NUMBER ONLY