

# THREADED ELECTRODES

NSRW Co., Inc. (800) 933-6779, FAX: (205) 663-3221 Authorized Distributor CMW Inc.

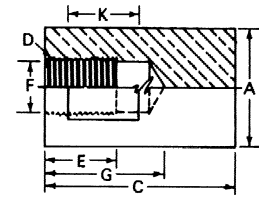


See page 6 for Metric conversions

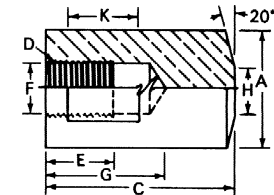
## CMW®3 Female Threaded Electrodes

CMW® 3 Part No.	C Overall Length	D Thread	A Major Dia.	E Thread Depth	G Water Hole Depth	F Water Hole Dia.	Over Wrench Flats	K Wrench Flat Length	H Welding Face Dia.
336508	2	5/8-18	1	3/4	1 1/4	37/64	7/8	3/4	1
336510			1 1/4				3/4	1 1/4	
336512			1 1/2				7/8	1 1/2	
326508	2	5/8-18	1	3/4	1 1/4	37/64	7/8	3/4	3/8
326510			1 1/4				3/4	1 1/2	
326512			1 1/2				7/8	5/8	

FLAT



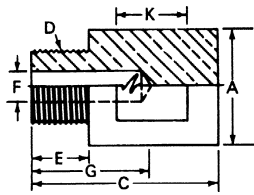
TRUNCATED



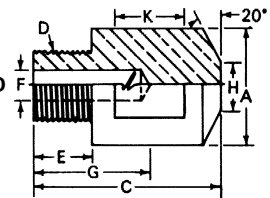
## CMW®3 Male Threaded Electrodes

CMW® 3 Part No.	C Overall Length	D Thread	A Major Dia.	E Thread Depth	G Water Hole Depth	F Water Hole Dia.	Over Wrench Flats	K Wrench Flat Length	H Welding Face Dia.
330507	2	5/8-18	7/8	9/16	1 1/4	5/16	3/4	5/8	7/8
330508		5/8-18	1	9/16		5/16	7/8	5/8	1
335506		5/8-11	3/4	15/32		5/16	5/8	5/8	3/4
335507		5/8-11	7/8	15/32		5/16	3/4	3/4	7/8
335508	2	3/4-10	1	5/8	1 1/4	3/8	7/8	7/8	1
335510		3/4-10	1 1/4	5/8		3/8	1	3/4	1 1/4
335512		7/8-9	1 1/2	3/4		1/2	1 1/4	7/8	1 1/2
325506	2	5/8-11	3/4	15/32	1 1/4	5/16	5/8	1/2	1/4
325507		5/8-11	7/8	15/32		5/16	3/4	5/8	5/16
325508		3/4-10	1	5/8		3/8	7/8	5/8	3/8
325510		3/4-10	1 1/4	5/8		3/8	1	3/4	1/2

FLAT



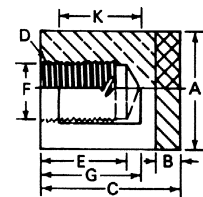
TRUNCATED



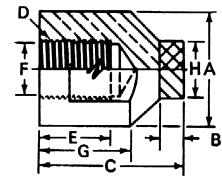
## ELKONITE® Faced Female Threaded Electrodes

ELKONITE® 10W3 Part No.	C Overall Length	D Thread	A Major Dia.	E Thread Depth	G Water Hole Depth	F Water Hole Dia.	Over Wrench Flats	K Wrench Flat Length	H Welding Face Dia.	B ELKONITE Thickness
636308	1 1/2	5/8-18	1	3/4	1	37/64	7/8	1/2	1	1/4
636310			1 1/4				1/2	1 1/4		
636312			1 1/2				3/4	1 1/2		
626308	1 1/2	5/8-18	1	3/4	1	37/64	7/8	1/2	5/8	
626310			1 1/4				1/2	5/8		

FLAT



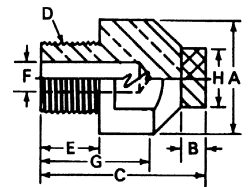
CENTERED



## ELKONITE® Faced Male Threaded Electrodes

ELKONITE® 10W3 Part No.	C Overall Length	D Thread	A Major Dia.	E Thread Depth	G Water Hole Depth	F Water Hole Dia.	Over Wrench Flats	H Welding Face Dia.	B ELKONITE Thickness
620307	1 1/2	5/8-18	7/8	9/16	1	5/16	3/4	1/2	1/4
625206	1 1/4	5/8-11	3/4	15/32	7/8	5/16	5/8	1/2	3/16
625308	1 5/8	3/4-10	1	5/8	1 3/16	3/8	7/8	5/8	1/4

CENTERED



\*Bodies for ELKONITE® Faced Electrodes are CMW® 3 Material