

STUD WELDING ELECTRODES

NSRW Co., Inc. (800) 933-6779, FAX: (205) 663-3221 Authorized Distributor CMW Inc.



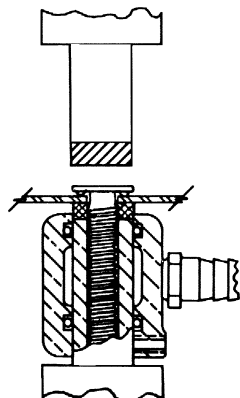
Stud Welding Electrode facings are Elkonite® 10W3. The shank is CMW® 3.
 Note: insulation sleeves are made of specially treated aluminum having a surface hardness of approximately 55 Rockwell C on both I.D. and O.D.

ASSEMBLED ELECTRODE	*Screw Thread Size	Insulation		Part No. Assembled Electrode		
		I.D.	H.			
<p>See page 6 for Metric conversions See page 7 for Taper dimensions</p> <p>16-3724-XXXX</p>	#4	Depth B .116	.375 16-3724-1161	.750 16-3724-1162	1.125 16-3724-1163	
	#5	.132	16-3724-1321	16-3724-1322	16-3724-1323	
	#6	Depth B .140	.500 16-3724-1401	1.00 16-3724-1402	1.500 16-3724-1403	
	—	.150	16-3724-1501	16-3724-1502	16-3724-1503	
	—	.157	16-3724-1571	16-3724-1572	16-3724-1573	
	#8	.169	16-3724-1691	16-3724-1692	16-3724-1693	
	#10	Depth B .191	.750 16-3724-1911	1.500 16-3724-1912		
	#12	.220	16-3724-2201	16-3724-2202		
	.250	.254	16-3724-2541	16-3724-2542		
	<p>16-3725-XXXX</p>	.250	Depth B .254	.750 16-3725-2541	1.500 16-3725-2542	
—		Depth B .277	1.00 16-3725-2771	2.00 16-3725-2772		
.312		.317 (8mm)	16-3725-3171	16-3725-3172		
—		.339	16-3725-3391	16-3725-3392		
—		.365	16-3725-3651	16-3725-3652		
.375		.380	16-3725-3801	16-3725-3802		
<p>16-3726-XXXX</p>	—	Depth B .401	1.00 16-3726-4011	2.00 16-3726-4012		
	—	.427	16-3726-4271	16-3726-4272		
	.437	.444	16-3726-4441	16-3726-4442		
	.500	.502	16-3726-5021	16-3726-5022		
	—	Depth B .552	1.00 16-3726-5521	2.00 16-3726-5522		
	.625	.630	16-3726-6301	16-3726-6302		
	—	.676	16-3726-6761	16-3726-6762		
	—	.801	16-3726-8011	16-3726-8012		

For upper electrode use standard electrode:

- 5/8 Dia. 632050 page 14
- 1 Dia. 16-1392 page 25
- 1 1/4 Dia. 16-1394 page 25

- | | |
|--------------------|---------------------|
| For Stud Electrode | Use Cooling Chamber |
| 16-3724-XXXX | 18-1340 |
| 16-3725-XXXX | 18-1342 |
| 16-3726-XXXX | 18-1343 |
| See Above | See Above |

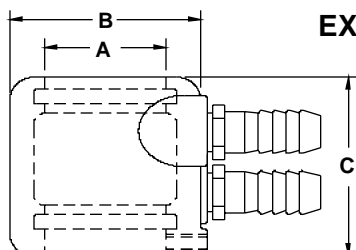


CMW External Water Cooling Chambers are designed to provide supplementary cooling in special, hard-to-cool applications. These cast aluminum jackets are securely sealed and locked in position over the external surface of 5/8", 7/8", 1", or 1 1/4" diameter electrodes. Standard water nipples connect to the regular water inlet and outlet hoses of these external cooling chambers.

CMW External Water Cooling Chambers are also recommended for *additional* cooling capacity on internally cooled applications operating at elevated temperatures.

One Piece Aluminum Castings—Rubber "O" Ring Seals—Standard Water Nipples—Allen Head Set-Screw Lock-On.

EXTERNAL ELECTRODE COOLING CHAMBERS



PART NO.	To Fit A Dia. Electrode	O.D. B	Overall Length C
18-1340	5/8	1 1/4	1 1/2
18-1341	7/8	1 1/2	1 1/2
18-1342	1	1 3/4	1 1/2
18-1343	1 1/4	2	1 7/8

