

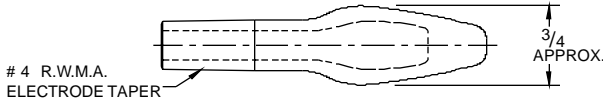
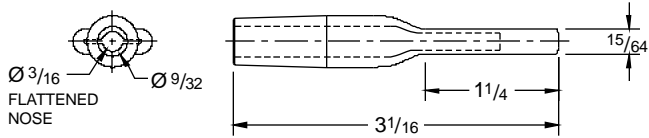
SPADE AND GUN ELECTRODES



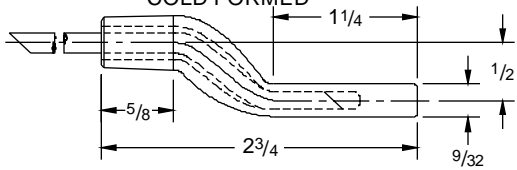
NSRW Co., Inc. (800) 933-6779, FAX: (205) 663-3221 Authorized Distributor CMW Inc.

See page 6 for Metric conversions
See page 7 for Taper dimensions

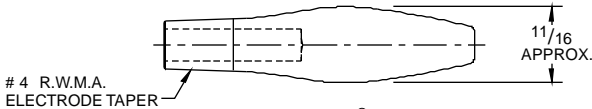
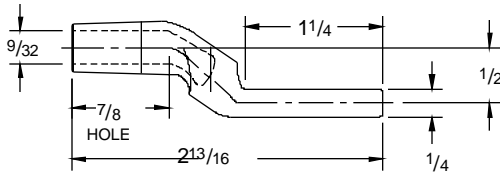
SPADE ELECTRODES



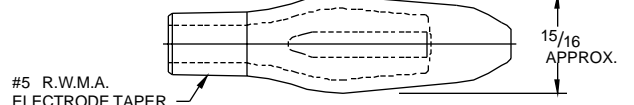
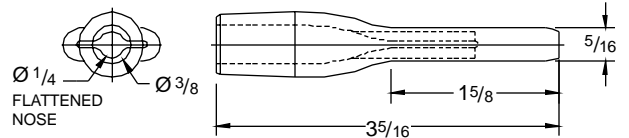
16-38209 CMW® 3
COLD FORMED*



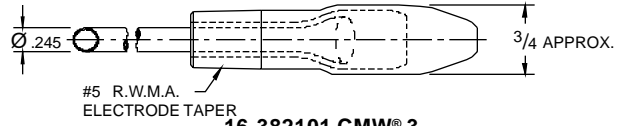
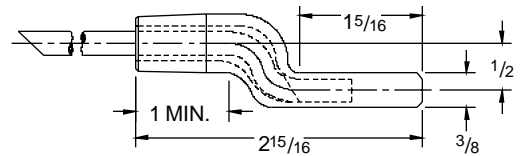
16-38201 CMW® 3
COLD FORMED*



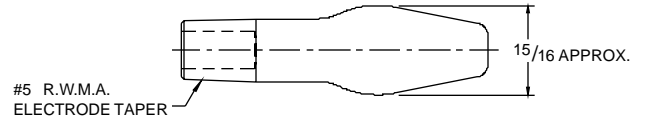
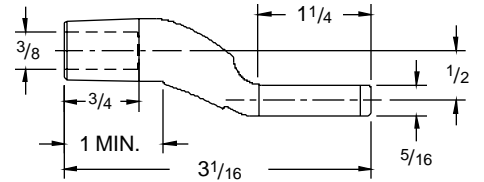
16-38202 CMW® 3
COLD FORMED*



16-382109 CMW® 3
COLD FORMED*



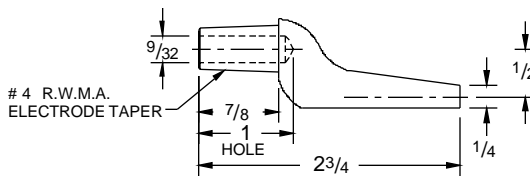
16-382101 CMW® 3
COLD FORMED*



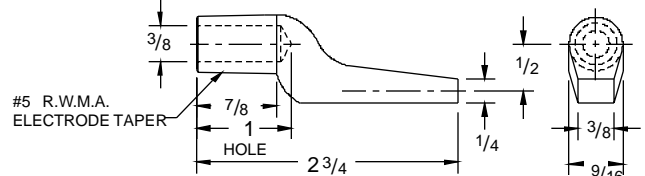
16-382102 CMW® 3
COLD FORMED*

* Optional material available on special order: CMW@28 & CMW@100

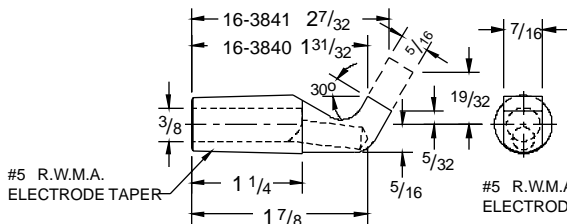
GUN ELECTRODES



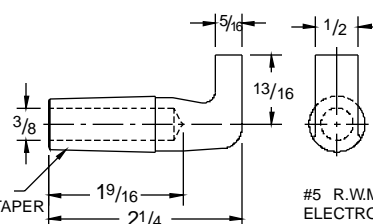
16-3820 CMW® 3
CASTING



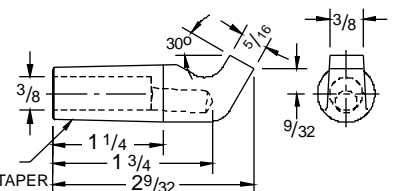
16-3821 CMW® 3
CASTING



16-3840 AND
16-3841 CMW® 3
COLD FORMED*



16-382120 CMW® 3
CASTING



16-3847 CMW® 3
COLD FORMED*

ORDER BY CMW PART NUMBER ONLY

BENT DIMENSIONS REFERENCE ONLY