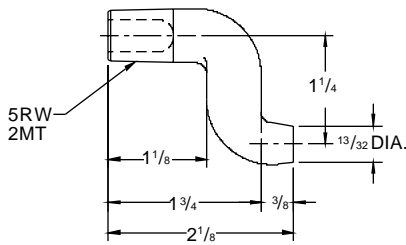
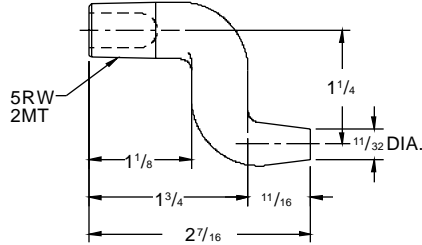


CRANKELECTRODES

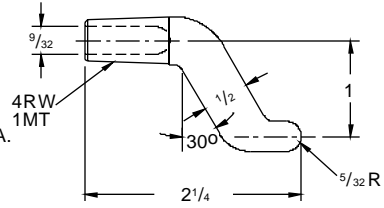
NSRW Co., Inc. (800) 933-6779, FAX: (205) 663-3221 Authorized Distributor CMW Inc.



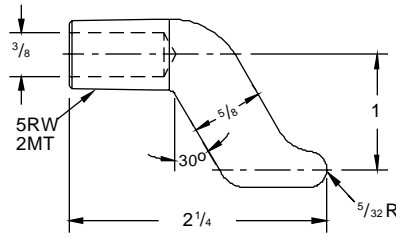
**16-38661 CMW® 3
COLD FORMED***



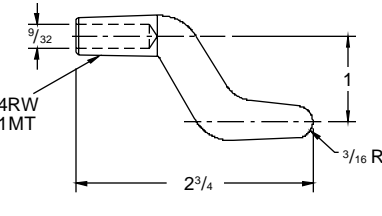
**16-3866 CMW® 3
COLD FORMED***



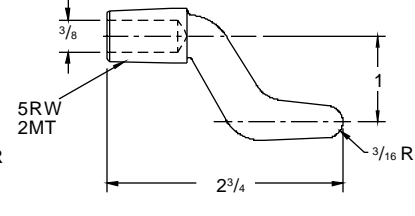
**16-3835 CMW® 3
CASTING**



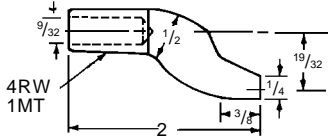
**16-3836 CMW® 3
CASTING**



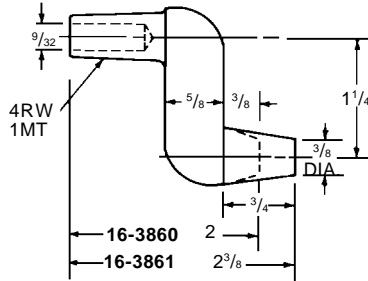
**16-3837 CMW® 3
CASTING**



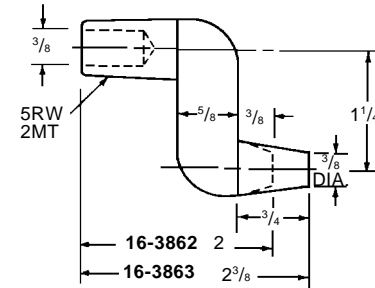
**16-3838 CMW® 3
CASTING**



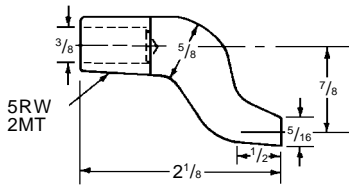
**16-3870 CMW® 3
COLD FORMED***



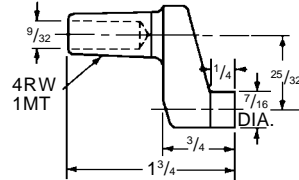
**CMW® 3
FORGED**



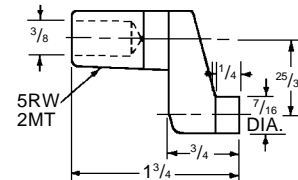
**CMW® 3
FORGED**



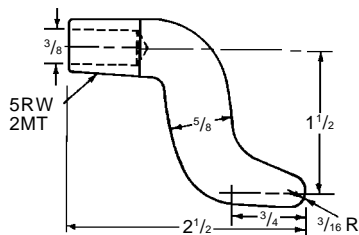
**16-3871 CMW® 3
COLD FORMED***



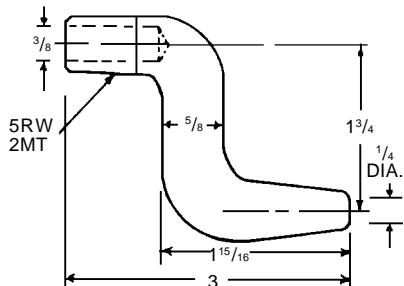
**16-3873 CMW® 3
CASTING**



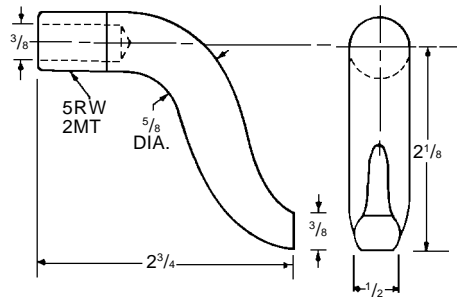
**16-3874 CMW® 3
CASTING**



**16-38351 CMW® 3
COLD FORMED***



**16-38352 CMW® 3
COLD FORMED***



**16-38353 CMW® 3
COLD FORMED***

* Optional material available on special order:
CMW® 28, CMW® 100

See Page 6 for Metric conversions See page 7 for Taper dimensions